



TCP SECURITY
SOLUTIONS

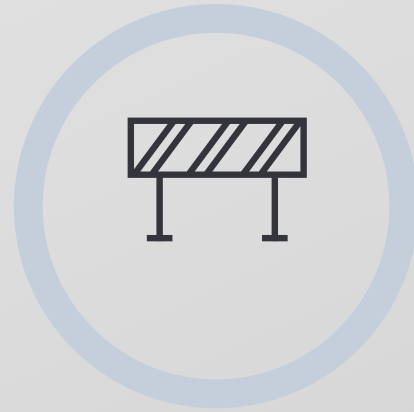
Miami Beach

ROADMAP





Please find below the pricing information for the perimeter materials for each of the three options under review.



Our team will work with you to develop and design the optimal solution that leverages TCPSS products and partner solutions. In addition, we can provide an overview of our additional services and suggest any relevant technology that may enhance your security measures.



Once the final design options have been determined, TCPSS will provide a comprehensive solution proposal for your consideration.

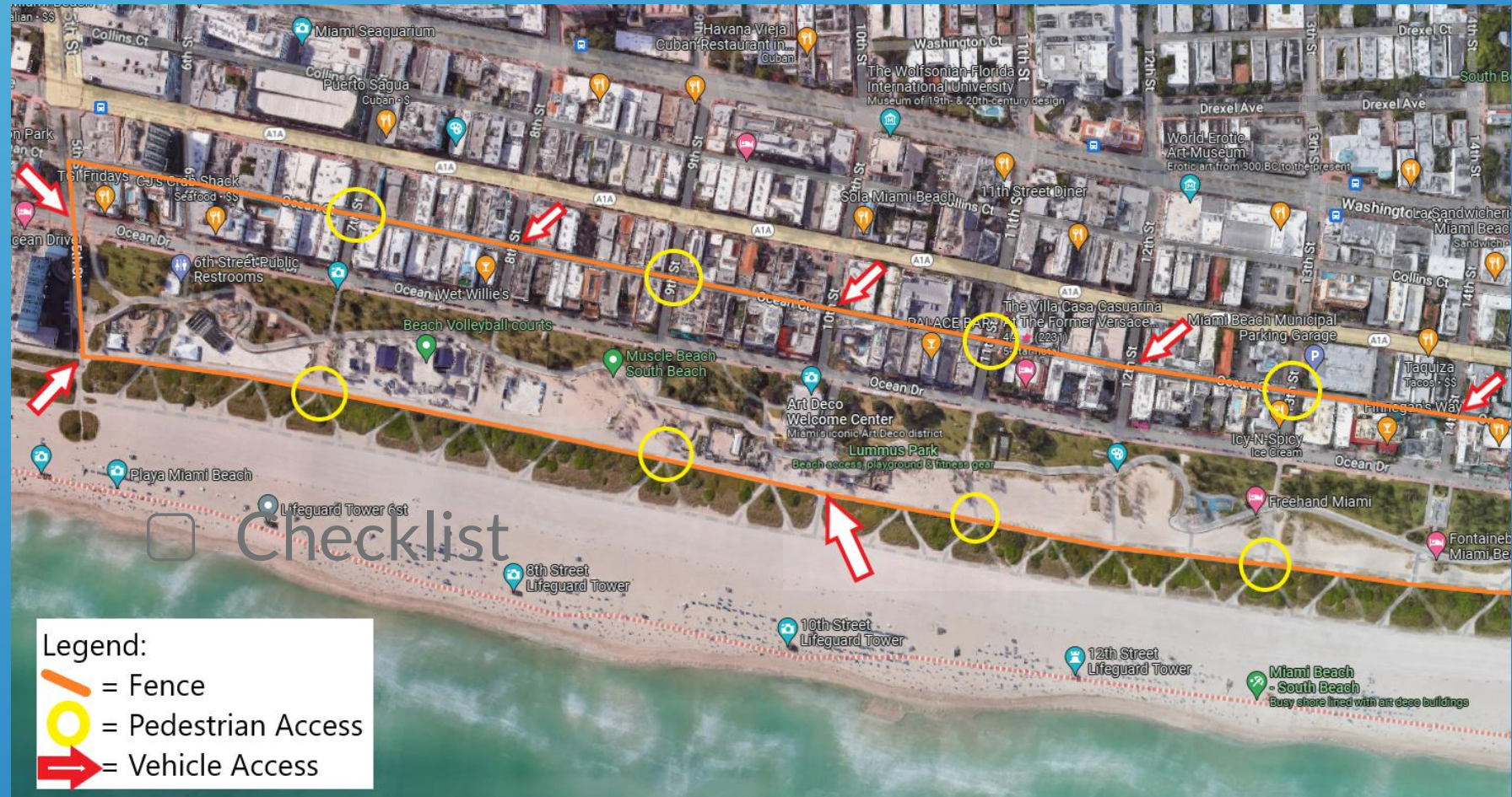
3 Physical Perimeter Options

Each of the three options utilizes a different number of products to create a physical perimeter. All options include a range of security features, such as fencing, Secureguard barriers, Gatekeeper, Sally Ports, Nasatka HVM, and Walk Through Detectors. Please note that these figures are rough estimates



1

Item	Quantity
Gatekeeper	400 LF
SecureGuard	750 LF
Claw Safety Barrier	30 Units
Walk Through Metal Detectors	90 Units
12' tall G8 Fence	10,000 LF
Furnish, Install, Teardown	Included
Total Cost:	\$2,753,807.50



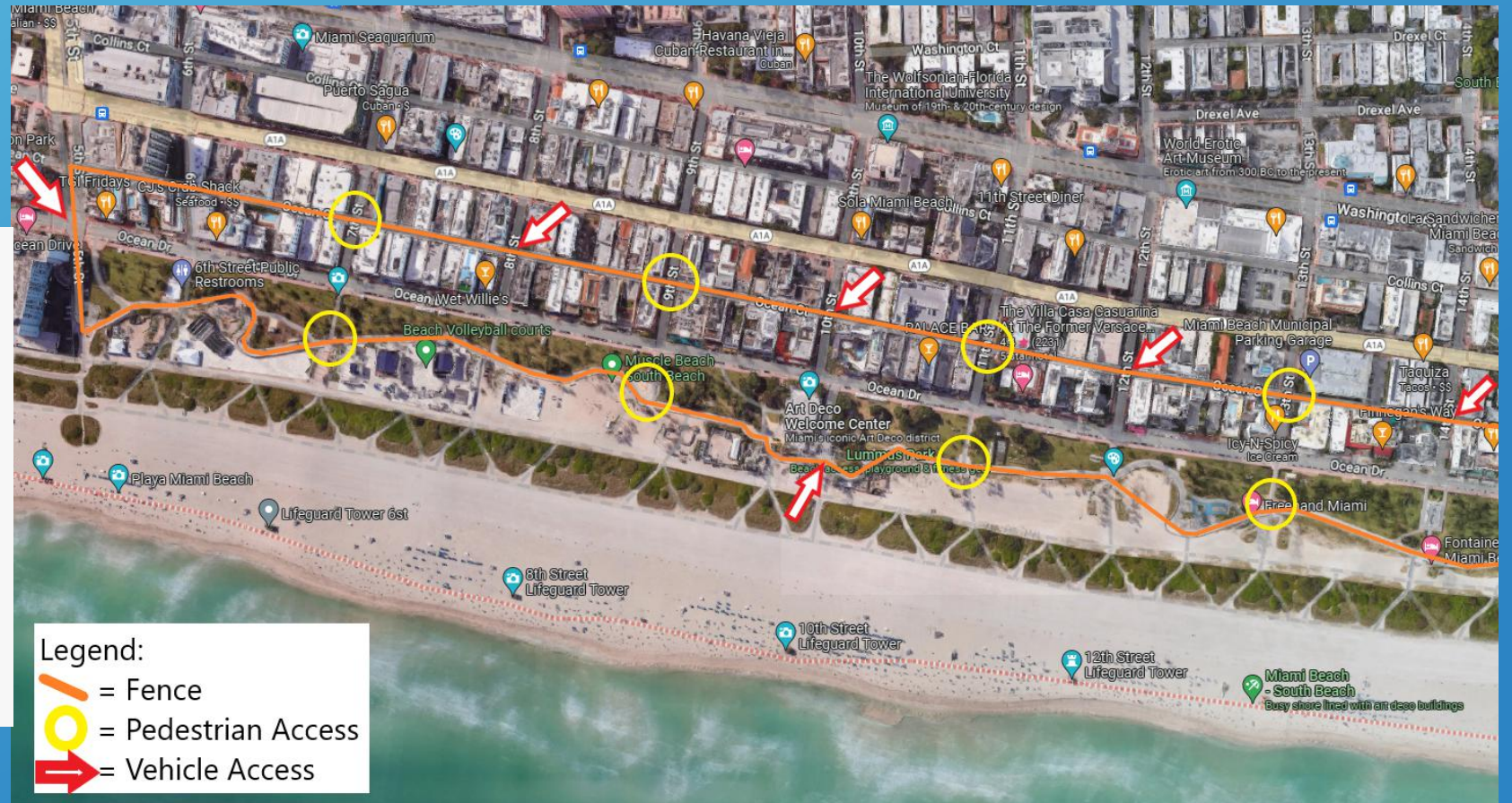
Checklist

Legend:

-  = Fence
-  = Pedestrian Access
-  = Vehicle Access

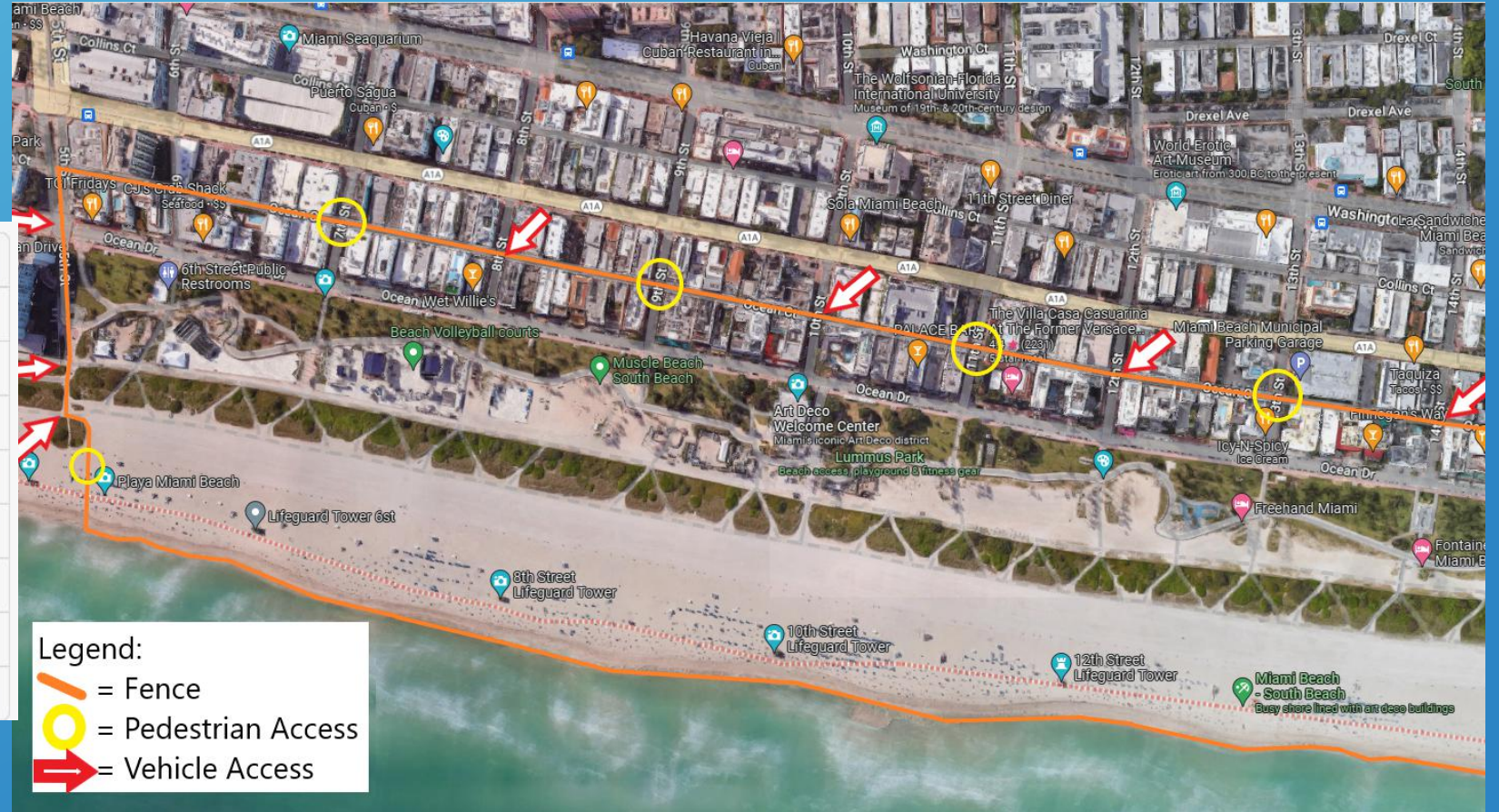
2

Item	Quantity
Nasatka (Delta) Barriers	18
Gatekeeper	800 LF
SecureGuard	750 LF
Claw Safety Barrier	30 Units
Walk Through Metal Detectors	96 Units
12' tall G8 Fence	10,000 LF
Furnish, Install, Teardown	Included
Total Cost:	\$2,925,315.00



3

Item	Quantity
Nasatka (Delta) Barriers	16
Gatekeeper	500 LF
SecureGuard	750 LF
Claw Safety Barrier	34 Units
Walk Through Metal Detectors	90 Units
12' tall G8 Fence	11,000 LF
Furnish, Install, Teardown	Included
Total Cost:	\$3,005,605.00

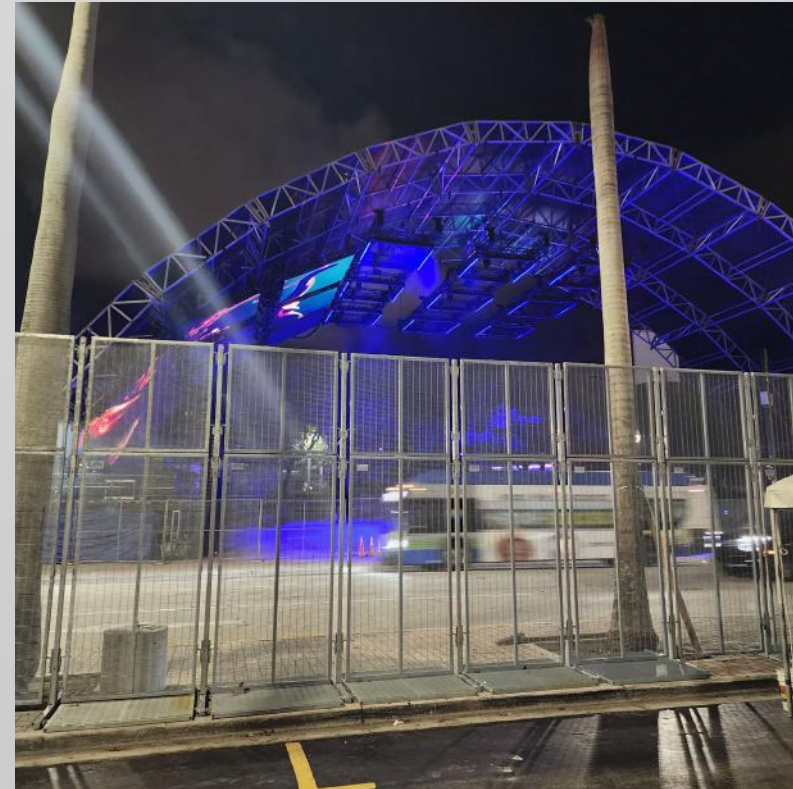


Barrier Products

Items Included in Perimeter Barrier Costs

G8 Fencing

The G8 systems provide a convenient, surface-mounted, and rapidly deployable temporary fencing solution that is perfect for safeguarding critical sites during events, site works, or crowd management. With a modular design and the ability to reach heights of up to 12ft. , G8 can be erected quickly, providing an affordable and secure barrier around the asset area. Additionally, the system's flexible features enable the integration of monitoring systems such as CCTV and Access Control for enhanced perimeter protection.



**TCP SECURITY
SOLUTIONS**

SecureGuard



The SG Mobile range of products provides an array of distinctive solutions that cater to permanent, portable, and temporary requirements. All products within the range comply with PAS 68 standards, having undergone rigorous testing and emerged successful. These are FDOT approved traffic barriers.



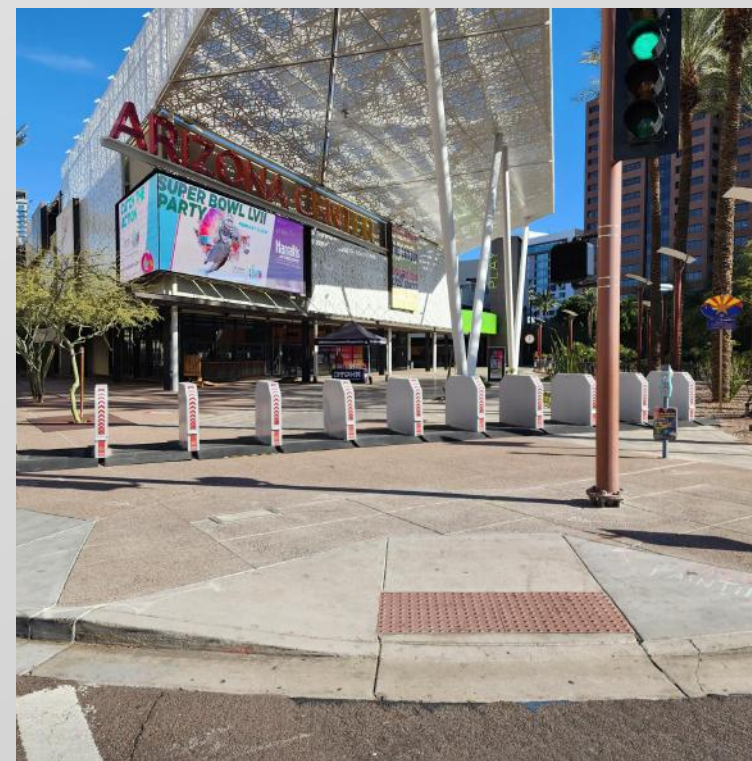
Designed for quick installation, this system can be set up swiftly, requiring only a minimal 150mm concrete foundation in hard ground, and soil anchors for soft ground, making it a remarkably adaptable option suitable for both permanent and temporary applications.



Gatekeeper

Our Gatekeeper barrier system is designed for freestanding, rapid deployment, and pedestrian permeability, while still allowing for vehicle access through removable upright members. The galvanized base and upright structures, along with the powder-coated shroud, ensure durability and a long-lasting finish.

Our system is specifically designed to protect pedestrians and infrastructure and has been rigorously tested to meet IWA-14 requirements. It has achieved an impressive IWA14.1:2013 V/2500 (N1G)/48/90:5.2 rating, as confirmed in the MIRA report - MIRA-1217732-007-005-02-W0044. With this level of performance, you can trust that our barrier system provides exceptional security and protection.



Nasatka HVM

The NMSB XV-P is a relocatable, Portable barrier used for intermediate-threat security areas requiring versatile perimeter protection. The NMSB XV-P utilizes either a crane or forklift for rapid deployment. This unit, standalone and non-anchored is certified to STOP 15,000-pound vehicle traveling at 30 mph. The average barrier opening is 12' (3.66 meters). In the up position the top of the barrier is 31" (78.7 cm) above the road surface. Hot-dip galvanized for years of service. EPA approved self-contained attached housing unit.





Walk Through Detectors

Our solution sets itself apart with over four times the number of detection coils compared to competitors, resulting in uniform detection and precise pinpointing. The side panels feature independent zone indicator lights that not only detect height but also accurately locate objects passing through the archway, with left, center, and right indicators.



Installation

Our expert installation team, led by our highly trained project manager, will oversee the entire installation process to ensure that all items are properly installed and monitored throughout the event. With our team's extensive certifications and experience, you can trust that your security solution will be installed with precision and care.





Takedown

Once the event has ended, our team will promptly begin and complete the removal of the barrier system. Our project manager will oversee the entire takedown process to ensure that it is done efficiently and effectively, with attention to detail and safety.

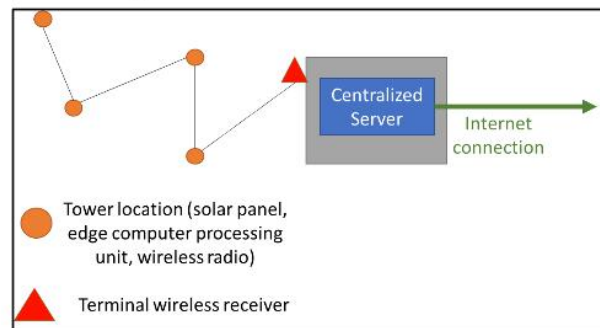
Rest assured that we will leave your property in the same condition it was in before we installed the system. All equipment and materials will be removed and cleared from the site, so you can focus on your post-event activities without any lingering concerns.



Technology Options

Additional Services to enhance Physical Barrier

Infrastructure Schematic



Portable Tower



Infrastructure

These components are required to support the technology solution's various functionalities, by providing power, a physical place to mount the technology components, and graphical processing power.

Components:

- Portable tower with solar panels
- Decentralized (edge) computing appliances to process video and LiDAR feeds
- Centralized server
- Wireless data transmission



Mass Notification

Networked mass notification speakers can be utilized to play pre-recorded messages or live, ad hoc messages.

Proposed tower assemblies have built-in screens to provide visual cues for crowds.

Network Bullhorn Speaker



Mass Notification on Tower



Suggested Fixed Camera



Suggested PTZ Camera



Video Surveillance

- 10MP fixed cameras (2 per tower) for general situational awareness and video monitoring; will have IR for night-time applications
- 32x optical zoom PTZ (pan-tilt-zoom) camera with IR; utilized for pinpoint monitoring of specific areas or situations
- Milestone device licenses and tie-in with enterprise Milestone system

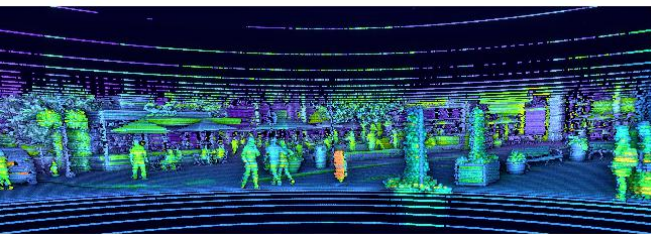


LiDar

Proposed Sensor Layout



Example LiDAR Sensor Output



- Centimeter-accurate 3D images
- Reliably track and detect moving objects, including people and vehicles
- Operational in all weather and lighting conditions
- Compliments video surveillance – anomalies detected by LiDAR can “instruct” PTZ camera where to look to capture video footage

License Plate Recognition/ Under Vehicle Scanning

- Camera is mounted at a level that is designed to capture images of license plates.
- Software is utilized to store license plate images, which can be used for forensic purposes in the event of an incident.
- Proactive alerts can be utilized to alert law enforcement when a “banned” vehicle is detected.
- Two cameras (in/out) are required for each tower assembly
- Under Vehicle Scanning Available

License Plate Recognition Camera



Analytic Software

Software will take data obtained from LiDAR sensors and network cameras and analyze it, proactively looking for:

- Fighting and unrest
- Suspicious activity
- Crowd gathering and dispersion
- Vehicle incidents
- Perimeter breaches
- Restricted area monitoring
- Suspicious objects and packages
- Firearms/weapons



Gunshot Detection Sensor

Technology developed by the Department of Energy

Uses algorithms to analyze firearm discharge event energy levels and waveforms

Method of analysis reduces risks of false positives



PROFESSIONAL SERVICES AND INSTALLATION

- ✓ Assembly, Delivery, Setup
- ✓ On-Site End User Training
- ✓ Device Installation, Programming, and Testing
- ✓ 24/7 Service and Support
- ✓ Project Management
- ✓ Design Engineering and Drawings



THANK YOU FOR YOUR TIME



TCP SECURITY SOLUTIONS

CONTACT US

5514 Carmack, Tampa FL 33610

Phone: 630.234.8618

Email: sales@tcpsecuritysolutions.com

[www.https://tcpsecuritysolutions.com/](https://tcpsecuritysolutions.com/)